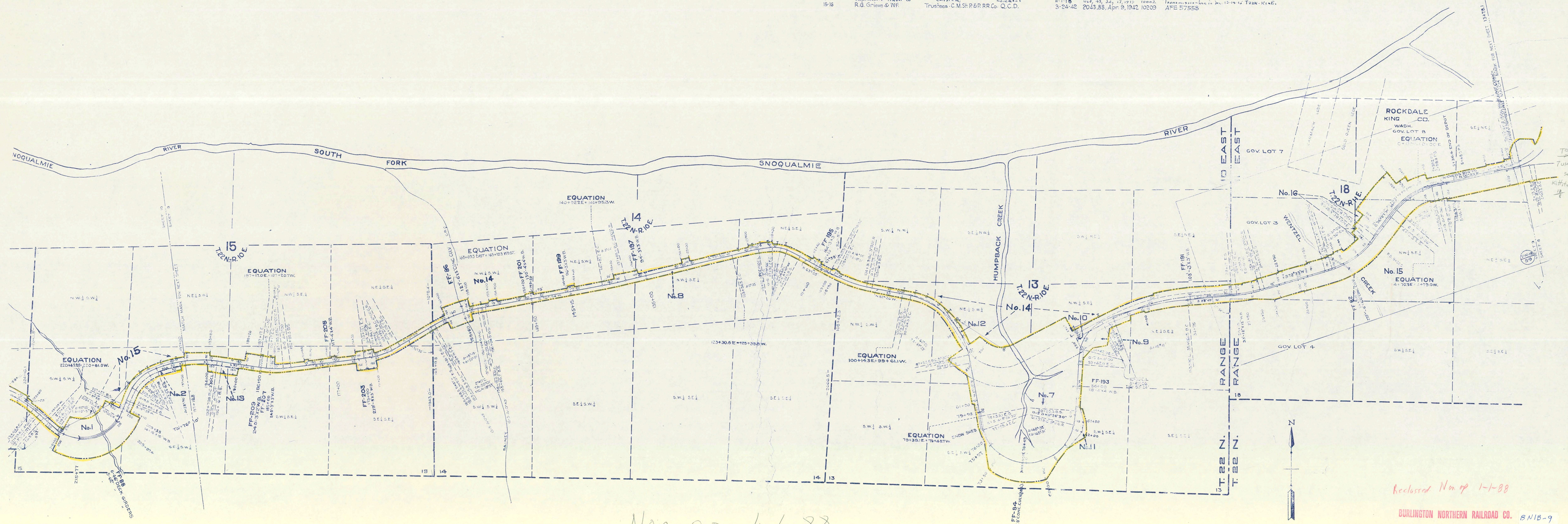


PARCEL NUMBER	GRANTOR	GRANTEE	INSTRUMENT	DATE	AMOUNT	CUSTOMER'S NO.	REMARKS
7	Weyerhaeuser Timber Co.	CM&STP Co. of Wash.	W.D.	1-24-08	575,204, June 18, 1908	9901	
8	Weyerhaeuser Timber Co.	CM&STP Co. of Wash.	W.D.	2-25-07	530,111, May 1, 1907	9902	
9	Weyerhaeuser Timber Co.	CM&STP Co.	W.D.	9-27-09	722,104, Nov. 2, 1909	10062	
10							Hold by company. Triangular strip in NW 3/4 Sec. 13, T22N, R10E.
11	Weyerhaeuser Timber Co.	CM&STP Co.	W.D.	9-27-09	722,104, Nov. 2, 1909	10062	
12	Weyerhaeuser Timber Co.	CM&STP Co. of Wash.	W.D.	1-24-08	575,204, June 18, 1908	9901	
13	Weyerhaeuser Timber Co.	CM&STP Co. of Wash.	W.D.	1-24-08	575,204, June 18, 1908	9901	
14	Weyerhaeuser Timber Co.	CM&STP Co.	W.D.	1-24-08	575,204, June 18, 1908	9901	
15-16	R.G. Grive & W.F.	Trustees - C.M. & St. P. RR. Co.	Q.C.D.	3-24-42	2043.88, Apr 9, 1942	10209	Transmission line in Dec. 12-14-16 T22N-R10E. AFE 575555



Non-op 1-1-88

Reclosed Nov 1-1-88

BURLINGTON NORTHERN RAILROAD CO. BN1B-9

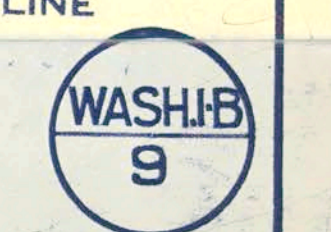
RIGHT OF WAY AND TRACK MAP

OPERATED BY THE

COAST DIVISION TO STATION 197+18.8

STATION 13+78.1 SCALE: 1IN. = 4 MILES

OFFICE OF VALUATION ENGINEER CHICAGO, ILLINOIS



5 Wires of the Postal Telegraph Cable Co. of Wash. are hung on Railway Co's Telegraph Pole Line between Hyak Depot and a point 3.5 Mi. west of Garcia, at about station 740+00 See Agmt. No. N-3495, dated Oct. 10-1927. R.E. File No. 216.

Sheet No. 9 of 18 sheets of C. M. & St. P. Ry. Co. Main Line from survey station 13+78.1 to survey station 197+18.8

A.E. Lodge
Valuation Engineer